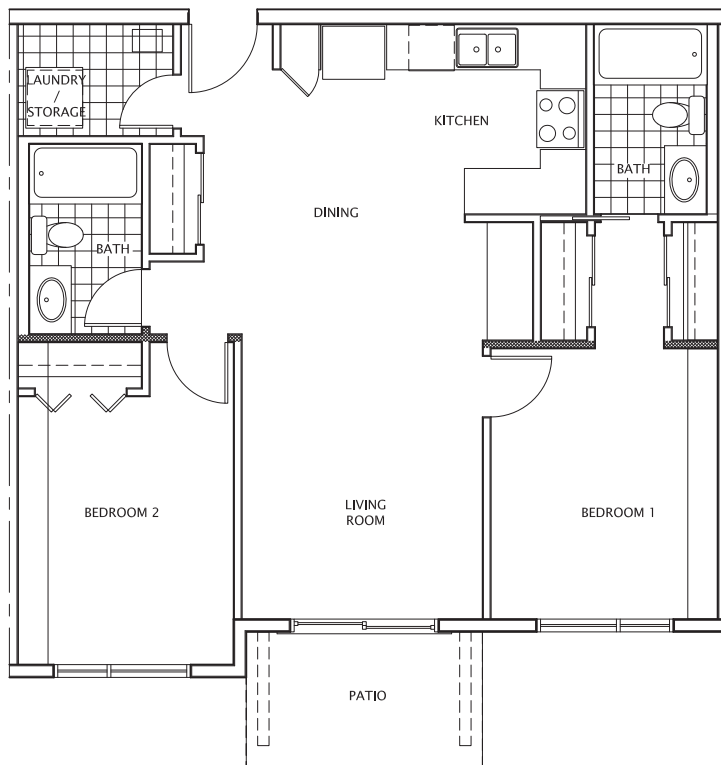


UNIT A

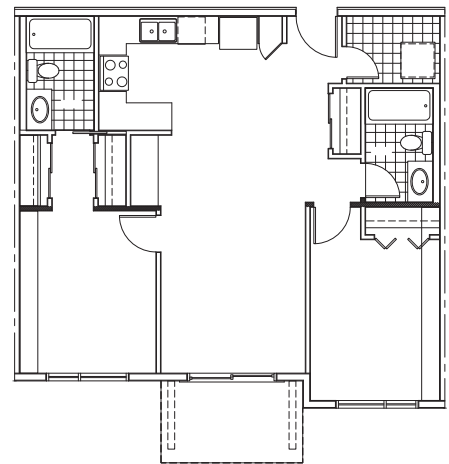
879 SQ. FT.



FLOORS 1 TO 4
879 SQ. FT.



FLOORS 1 TO 4 REVERSE
879 SQ. FT.



THE DEVELOPER AND BUILDER RESERVE THE RIGHT TO MAKE MODIFICATIONS AND CHANGES TO THE BUILDING, ANY UNIT, PARKING AREA AND STORAGE AREA DESIGN, SPECIFICATIONS, FEATURES AND FLOOR PLANS IN ORDER TO MAINTAIN THE HIGH STANDARDS OF THIS DEVELOPMENT OR TO COMPLY WITH MUNICIPAL REQUIREMENTS. THE SQUARE FOOTAGE AND ROOM DIMENSIONS ARE BASED ON ARCHITECTURAL DRAWINGS AND MEASUREMENTS. THE LOCATION OF UTILITIES MAY NOT BE ACCURATELY DEPICTED HEREIN. FURNITURE LAYOUTS DEPICT STANDARD FURNISHING SIZES AND ARE INTENDED FOR REFERENCE ONLY. ALL SIZES, SQ FOOTAGES AND DIMENSIONS ARE APPROXIMATE AND THE ACTUAL AREA AND DIMENSIONS MAY VARY FROM THE PRELIMINARY PLANS TO THE FINAL SURVEY. LANDS TITLES MEASUREMENTS ARE TAKEN FROM FACE OF STUD, ARCHITECTURAL SIZES ARE TAKEN FROM CENTER LINE OF PARTY WALL. ERRORS AND OMISSIONS EXCEPTED.

FIT AND FINISH



Orchard SKY

Masterfully Designed Homes

- Built by Customer Choice Award Winner for highest customer satisfaction Truman Homes
- Comprehensive warranty coverage including deposit payments are protected by the Alberta New Home Warranty Program
- Maintenance free exteriors featuring private decks, patios and courtyards
- Oversize high performance energy saving windows and oversize doors/patio sliders as per plan
- Built-in smoke/heat detectors and in-suite water sprinkler system
- Individual suite utility metering for maximum energy savings, coupled with individual thermostat for temperature control
- Painted, secured, and heated underground parkade with secured storage areas
- Enter phone and security monitoring system at lobby
- Luscious professionally designed and irrigated landscaped area throughout site

The Suites

- Beautifully appointed interiors by our award-winning interior design team with a choice of 2 timeless interior color schemes: New York & L.A.
- Custom designed solid core entry door with security view-hole, custom printed address plate and accented by individual suite lighting fixture by entrance
- Contemporary imported high gloss ceramic tile, with custom set full height kitchen backsplashes
- A choice of 2 high quality engineered cork flooring with underlay throughout all living areas
- In-suite technology featuring integrated wiring, Smart Plug USB plug jack connection, and TV / Telephone connections in principal areas
- Included stackable washer and dryer
- Brilliant lighting: stay illuminated with our hand-picked energy efficient contemporary light fixtures throughout
- Sophisticated Elle 2" designer window treatment package for all windows
- Smooth panel doors with levered anti scuff and scratch Taymor door hardware throughout
- Modern sleek line profiled painted baseboards, door frames and casings
- Ample closet and storage shelving as per plan

Kitchens for the Inspiring Chef

- Award winning kitchen cabinetry design with a choice of 2 color palettes: New York or L.A.
- Floor to ceiling ergonomic TRUspace™ contemporary kitchen cabinetry highlighting premium textured finishes with integrated storage and shelving
- Polished hard surface quartz eased edge countertops
- Undermount sink with chrome pull out faucet
- Full height tile kitchen backsplashes
- Gleaming Foundry™ custom made full height door hardware as per selections
- For the chef; high end energy saving stainless steel appliances
- Sophisticated kitchen cabinet design with optional eating bar (as per plan)
- Integrated pull out garbage bin under sink
- Versatile easy access cutlery drawer
- Deep drawers for pots and pans

Bathrooms of Envy

- Polished hard surface quartz eased edge countertops
- Kohler modern square edge tubs with sloping lumbar support accented by contemporary tiles, creating a luxe spa atmosphere
- Full width custom mirror with polished edges
- TruSpace™ vanity design with maximum storage in mind
- Kohler plumbing fixtures with Kohler porcelain sink
- Comfort height Kohler toilets
- Matching bathroom Taymor hardware and accessories
- Integrated polished edge glass shower door and frame as per plan
- Environmentally conscious WaterSense® fixtures, shower heads, and toilets
- Safety and pressure-balancing mixing valves for tub and showers for well-being

THE DEVELOPER AND BUILDER RESERVE THE RIGHT TO MAKE MODIFICATIONS AND CHANGES TO THE BUILDING, ANY UNIT, PARKING AREA AND STORAGE AREA DESIGN, SPECIFICATIONS, FEATURES AND FLOOR PLANS IN ORDER TO MAINTAIN THE HIGH STANDARDS OF THIS DEVELOPMENT OR TO COMPLY WITH MUNICIPAL REQUIREMENTS. THE SQUARE FOOTAGE AND ROOM DIMENSIONS ARE BASED ON ARCHITECTURAL DRAWINGS AND MEASUREMENTS. THE LOCATION OF UTILITIES MAY NOT BE ACCURATELY DEPICTED HEREIN. FURNITURE LAYOUTS DEPICT STANDARD FURNISHING SIZES AND ARE INTENDED FOR REFERENCE ONLY. ALL SIZES AND DIMENSIONS ARE APPROXIMATE AND ACTUAL AREA AND DIMENSIONS MAY VARY FROM THE PRELIMINARY PLANS TO THE FINAL SURVEY. ERRORS AND OMISSIONS EXCEPTED.